

Maximize patient care in the Cardiac Catheterization and Interventional Radiology Labs

Presource® Products and Services

When performing planned diagnostic and interventional procedures, an external, non-invasive solution to control and stop bleeding is essential.



Introducing the HemCon® Bandage

With the HemCon® Bandage, medical professionals can use a non-invasive solution to control bleeding within minutes. When in contact with blood, the HemCon® Bandage aggressively adheres to the site. This adhesive-like action forms a strong, flexible barrier that seals and stabilizes the wound.

While originally developed for use on the battlefield, HemCon has launched a new line of products designed to advance the standard of care in various areas of the hospital, including emergency and trauma care, catheter and interventional radiology labs and rapid response units.



HemCon® Bandages enhance the direct pressure protocol to improve patient care*

- Immediate, reliable and easy to use
- Used successfully on anticoagulated patients and those with bleeding disorders
- Contains no human or animal clotting factors
- Non-exothermic (non-heat producing)
- No adverse events reported to date**
- Can be left in place for up to 48 hours

By effectively reducing time to hemostasis, the HemCon® Bandage:

- Reduces blood loss
- Shortens one-on-one care needs to allow for care of additional patients
- Decreases clean-up and biohazard exposure for medical staff

Ordering Information

Cat. No.	Description	Packaging
HEM225	2" x 2" HemCon® Bandage	5 bandages/bx, 20 boxes (100 bandages)/cs

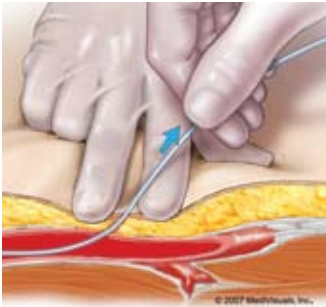
The HemCon® Bandage is also available in additional sizes for use in other procedural areas.

*Refer to your institutional protocol.
Not a substitute for mechanical closure devices.

**Bandage contains chitosan from shellfish.
Discontinue use if you suspect an allergic reaction.



How the HemCon® Bandage Works



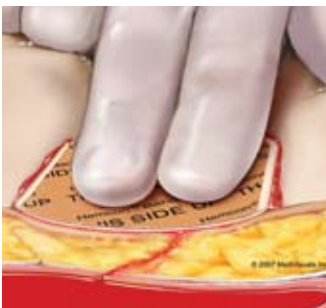
Step 1
In a catheter or interventional radiology procedure, the sheath is in place and drawn out of the puncture site at an angle. Direct, proximal pressure is placed on the arterial puncture to control bleeding. A small amount of pressure is also applied to the skin puncture site.



Step 2
The sheath is removed while holding proximal pressure. The access site must have a small amount of blood present (about the size of a nickel) for the dressing to adhere. This blood allows the dressing to seal the site and form an antibacterial barrier.

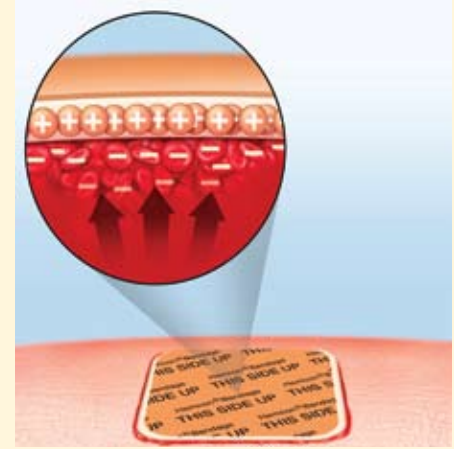


Step 3
A HemCon® Bandage (2" x 2") should be applied to the puncture site of the skin and extend over the entire arterial access tract. Since the HemCon® Bandage possesses a unique adhesion system, the area should NOT be wiped clean of blood nor moistened with non-heparinized saline solution, as instructed with other patches. This will prohibit the adhesive antibacterial seal.



Step 4
Apply and hold digital pressure across the entire arterial access tract for 2 to 5 minutes. After pressure is released, cover the bandage with a transparent dressing to hold it in place. The bandage can remain in place for up to 48 hours and should be removed with water or saline.

The HemCon® 2" x 2" Bandage is available single sterile and can also be incorporated into Presource® Custom Procedure Packs. For more detailed information regarding this offering, please contact your Cardinal Health Presource® Products sales representative or customer service at 800.964.5227.



HemCon® Bandages work by becoming extremely sticky when in contact with blood. This adhesive-like action seals the wound and controls bleeding. HemCon® products are fabricated from chitosan, a naturally occurring, bio-compatible polysaccharide. Because chitosan has a positive charge, it attracts red blood cells, which have a negative charge.

The red blood cells create a seal over the wound as they are drawn into the bandage, forming a very tight, coherent clot. In addition to providing hemostasis, HemCon® dressings also offer an antibacterial barrier.

The HemCon® Bandage enables medical professionals to enhance their direct pressure protocol with an effective solution that reduces time to hemostasis, even for patients on anticoagulants.

HemCon is a registered trademark of HemCon Medical Technologies, Inc. *Essential to care* is a trademark and **Presource** is a registered trademark of Cardinal Health, Inc. or one of its subsidiaries

© Copyright 2007, Cardinal Health, Inc. or one of its subsidiaries. All rights reserved.
Lit. No. 2PRE0626 (1107/0M/MC3356)

 Paper contains a minimum of 10% post-consumer fiber.

Cardinal Health
Presource® Products
1500 Waukegan Road
McGaw Park, IL 60085

cardinalhealth.com/presource