

What's new?

October 2009

The following features are now available in CardinalASSIST®:

New Report:

MedStation® Replenishment Strategy report

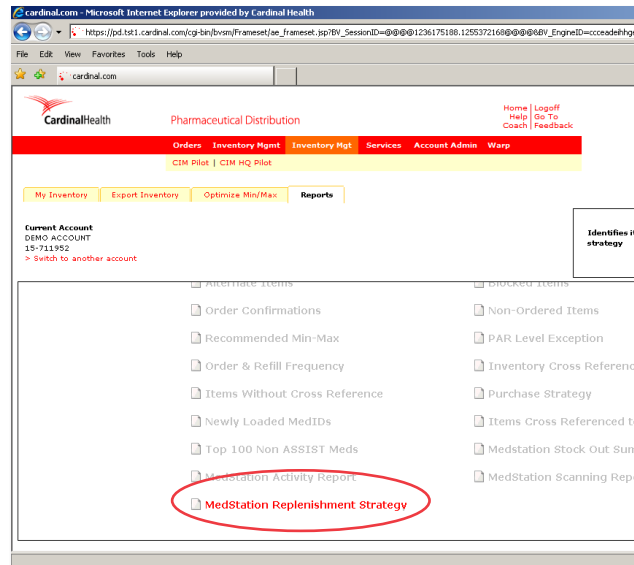
1. Report that identifies items that have been replenished outside of the desired inventory strategy.
2. This report allows users to pinpoint items that are being refilled to their automated dispensing machine too frequently and/or too infrequently.

Best Practices:

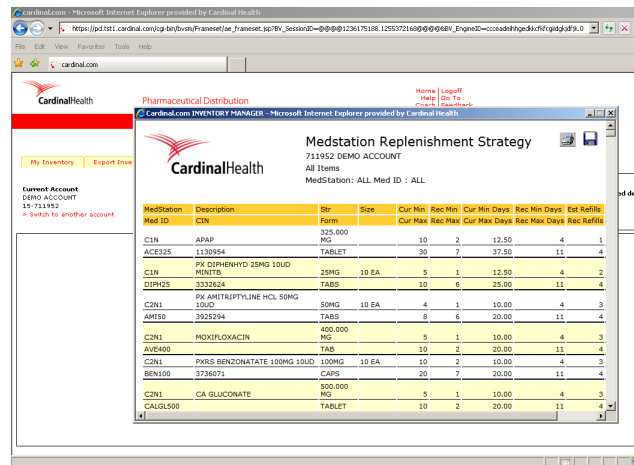
1. Running this report will display recommendations based on the last six weeks of dispensing activity and will allow users to determine discrepancies in their purchase strategy. The report can be downloaded as a spreadsheet and sorted or filtered as desired.
2. This report identifies items where the current Days Inventory On Hand for an item are outside of the hospital wide inventory strategy. Adjusting these items to coincide with your inventory strategy will ensure that your inventory levels remain at the desired level in your automated dispense cabinets.
3. The report will help you identify where items are being refilled at a frequency inconsistent with your overall inventory strategy, which will allow you to adjust par levels accordingly.

continued on next page...

1.



2.



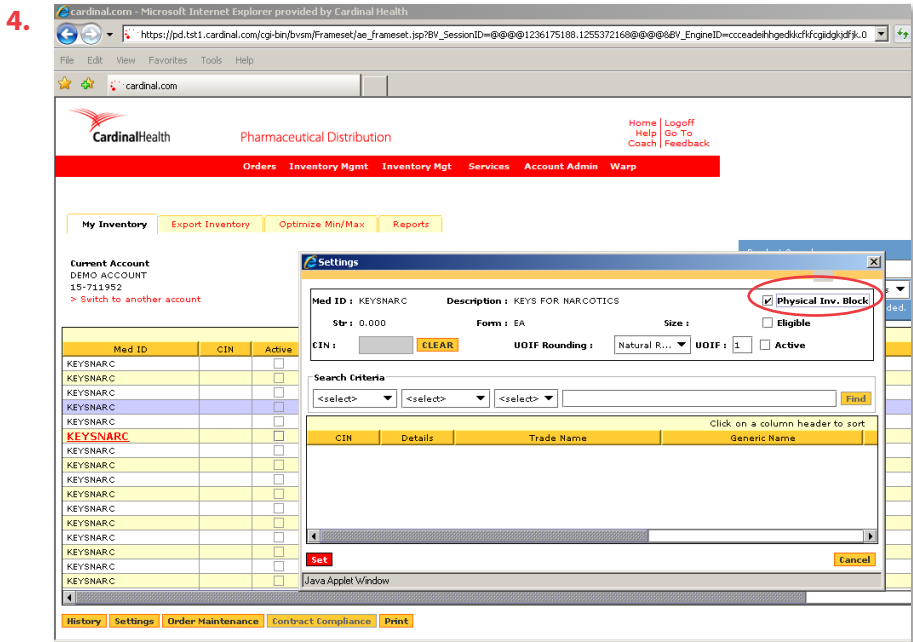
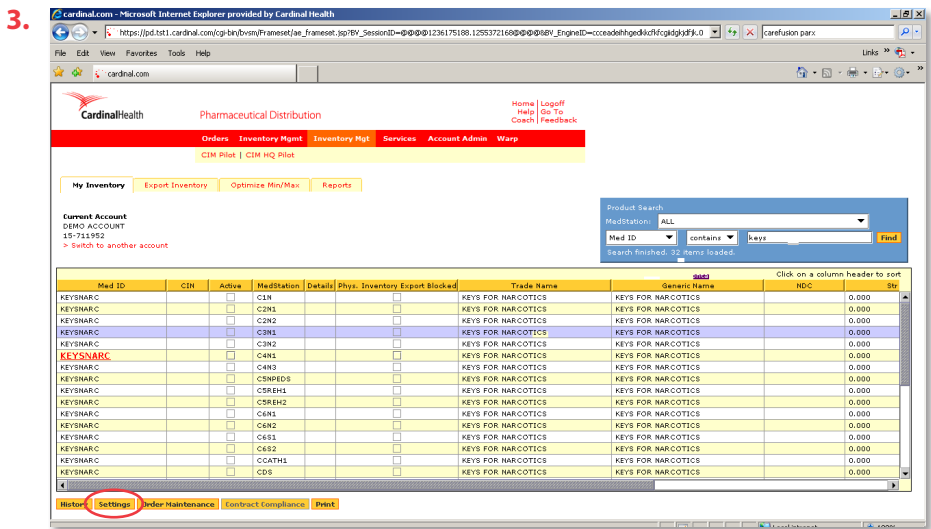
Report Enhancement:

Physical Inventory Blocked items filtered from CardinalASSIST® reports

- 3. Items can now be filtered from CardinalASSIST® reports using the Settings button, and selecting the Physical Inventory Block radio button.
- 4. This functionality allows users to remove any miscellaneous items from their reports to ensure that metrics are being tracked for desired items.

Best Practices:

- 1. By blocking items for Physical Inventory export, they will no longer show on several CardinalASSIST® reports outlined below.
 - MS Stockout Summary,
 - MS Activity,
 - Purchase Strategy,
 - REC MIN/MAX,
 - Top 100 Non CA items,
 - Items Without Cross Reference,
 - Inventory Cross Reference,
 - Item Cross Referenced to Invalid CIN,
 - Order & Refill,
 - Replenishment Strategy
- 2. Filtering these items will allow you to focus more on items that require attention, and will ensure that all metrics aren't being tracked on **non-formulary** items.



continued on next page...

Report Enhancement:

Par level recommendations added to MedStation® Stock Out report

- 5. The existing MedStation® Stock Out report now has additional data elements.
- 6. The report now displays recommended Min and Max levels based on the inventory strategy for each item appearing on this report.

Best Practices:

- 1. A separate report will no longer need to be run to determine par level recommendations based on items that have stocked out.
- 2. Running this report on a daily basis and making Par level adjustments to ensure stockouts don't re-occur is a key piece of CardinalASSIST® program maintenance

