



Incontinence care
The solution
is simple.

Now you really can **have it all**

Clinicians can have the product quality they want. You can have the savings you need. And patients, the dignity they deserve. It doesn't have to be complicated.

You're busy enough. Let's keep this **simple.**

The right product selection is right here

We asked clinicians what they wanted most in underpads, briefs and liners. Then built the product line that will help them deliver quality care. In fact, clinicians are a rich source of insights that helps guide our ongoing product development.

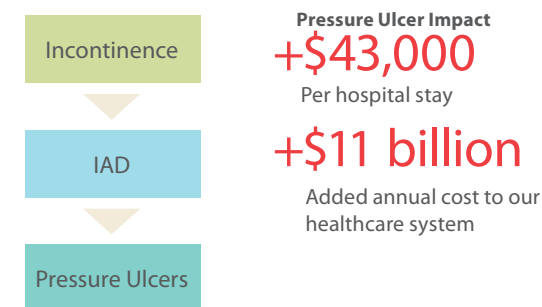
With a product selection customized to meet your needs, ordering becomes simpler and takes less time. You'll need less inventory, which means less shelf space. And most of all — you'll have an easier way to save while maintaining clinical quality. Both at the same time.

Simpler solution
~100 > 50 skus
Customized to meet
your needs

The simple way to help prevent **never events**

In 2008 CMS declared stage III and IV pressure ulcers a *never event*, to lessen their financial burden to the healthcare system. That creates a never-ending burden on *you*: to prevent these costly events from ever happening. Effective incontinence care is a proven way to help do just that.

Incontinence exposes skin to excess moisture, increasing its pH and lowering its function as a barrier. If moisture isn't removed in time, incontinence-associated dermatitis (IAD) can result. And that's a major risk factor for pressure ulcers.



Source: U.S. Department of Health & Human Services, AHRQ Patient Safety Network. (n.d.). Patient safety primers; never events. Retrieved from website: <http://www.psnnet.ahrq.gov/primer.aspx?primerID=3>

800.964.5227 • cardinalhealth.com

Contents

Choosing the right products	3
Premium underpads	4
Standard underpads	6
Briefs	8
Underwear	11
Insert pads	14
Pants	16

Collaboration is key

To combat the effects of incontinence, we work closely with clinicians. Listening to their concerns and ideas about the products that can help solve them. Guided by that perspective, we develop new, advanced technologies. Plus, a simplified set of products help you save as you care for incontinence.

When does advanced technology work even better?

When it's guided by experienced hands: yours to deliver care, ours to deliver the effective solutions to you. Together, let's lessen the effects of incontinence on your patients' quality of life, as well as your organization's bottom line.

- Nonwoven hydrophilic layer is soft and durable
- Super Absorbent Polymer (SAP) draws fluid away from the skin, locking it in the product's core
- Advanced core design improves absorption rates and skin dryness

Choosing the right products

Product	Absorbency	Indication for use
 Premium Underpads	<input checked="" type="radio"/> Extra <input checked="" type="radio"/> Maximum	<ul style="list-style-type: none"> • Protects bed and furniture • Promotes healthy skin
 Standard Underpads	<input type="radio"/> Light <input checked="" type="radio"/> Moderate <input checked="" type="radio"/> Heavy <input checked="" type="radio"/> Maximum	<ul style="list-style-type: none"> • Suitable for use in clinical procedures • Protects bed and furniture
 Briefs	<input type="radio"/> Moderate <input checked="" type="radio"/> Heavy <input checked="" type="radio"/> Premium heavy <input checked="" type="radio"/> Maximum	<ul style="list-style-type: none"> • Severe urinary output or drainage • Loss of bowel control
 Underwear	<input type="radio"/> Moderate <input checked="" type="radio"/> Heavy	<ul style="list-style-type: none"> • Moderate to severe urinary output • Loss of bowel control
 Insert Pads	<input type="radio"/> Moderate <input checked="" type="radio"/> Heavy <input checked="" type="radio"/> Maximum	<ul style="list-style-type: none"> • Light to moderate urinary output
 Knit and mesh pants		<ul style="list-style-type: none"> • Short-term use • Hold liners in place

Premium underpads made simple



Breathable back-sheet technology

Soft top sheet increases patient's comfort

Air permeable allowing air to circulate

Not made with natural rubber latex

Super absorbent core wicks fluid away from patient's skin

Extra absorbency

Maximum absorbency



Repositioning, Maximum absorbency

Cardinal Health number	Description	Size	Qty.
UPR3036	Light Green	30 x 36 in.	10 ea/bg, 4 bg/cs

- Strong enough to lift and reposition up to 400 lbs with breathable back-sheet technology
- Maximum Absorbency with a super absorbent core to wick fluid away from skin and contain voids
- Air-permeable, allowing air to circulate for use on low-air-loss mattresses
- Soft top sheet helps to increase patient comfort

Maximum absorbency

Cardinal Health number	Description	Size	Qty.
UPPM1824	Teal	24 x 18 in.	10 ea/bg, 9 bg/cs
UPPM2436	Teal	36 x 24 in.	10 ea/bg, 6 bg/cs
UPPM3136	Teal	36 x 31 in.	10 ea/bg, 4 bg/cs

- Strong, breathable back-sheet technology
- Air-permeable, allowing air to circulate for use on low-air-loss mattresses
- Maximum Absorbency with a super absorbent core to wick fluid away from skin and contain voids
- Soft top sheet helps to increase patient comfort

Extra absorbency

Cardinal Health number	Description	Size	Qty.
UPPMX2436	White	24 x 36 in.	5 ea/bg, 14 bg/cs
UPPMX3036	White	30 x 36 in.	5 ea/bg, 14 bg/cs

- Breathable back-sheet allowing air to circulate for use on low-air-loss mattresses
- Extra Absorbency with a super absorbent core to wick fluid away from skin
- Soft top sheet helps to increase patient comfort

Pulls moisture away

Premium underpads made simple

Standard underpads made simple



Light absorbency

Moderate absorbency

Heavy absorbency

Maximum absorbency

Light absorbency

Cardinal Health number	Absorbent core	Backsheet color	Size	Qty.
LT3030UPS	Fluff	Blue	30 x 30 in.	5 pc/bg, 30 bg/cs
LT2324UPS	Fluff	Blue	24 x 23 in.	5 pc/bg, 40 bg/cs
LT2336UPS	Fluff	Blue	36 x 23 in.	5 pc/bg, 30 bg/cs

Moderate absorbency

Cardinal Health number	Absorbent core	Backsheet color	Size	Qty.
MOD1724UPS	Fluff	Green	24 x 17 in.	5 pc/bg, 60 bg/cs
MOD2324UPS	Fluff	Green	24 x 23 in.	5 pc/bg, 40 bg/cs
MOD3030UPS	Fluff	Green	30 x 30 in.	5 pc/bg, 30 bg/cs
MOD2336UPS	Fluff	Green	36 x 23 in.	5 pc/bg, 30 bg/cs

Heavy absorbency

Cardinal Health number	Absorbent core	Backsheet color	Size	Qty.
HVY1724UPS	Fluff	Peach	24 x 17 in.	5 pc/bg, 60 bg/cs
HVY2336UPS	Fluff	Peach	36 x 23 in.	5 pc/bg, 30 bg/cs
<i>Wingfold Underpad Brief with side tape tabs</i>				
HVY2336WF	Fluff/Polymer	White	36 x 23 in.	5 pc/bg, 20 bg/cs
<i>Breathable for low air loss beds</i>				
HVY2336UPB	Fluff/Polymer	Blue	36 x 23 in.	5 pc/bg, 10 bg/cs
HVY3036UPB	Fluff/Polymer	Blue	36 x 30 in.	5 pc/bg, 7 bg/cs

Maximum absorbency

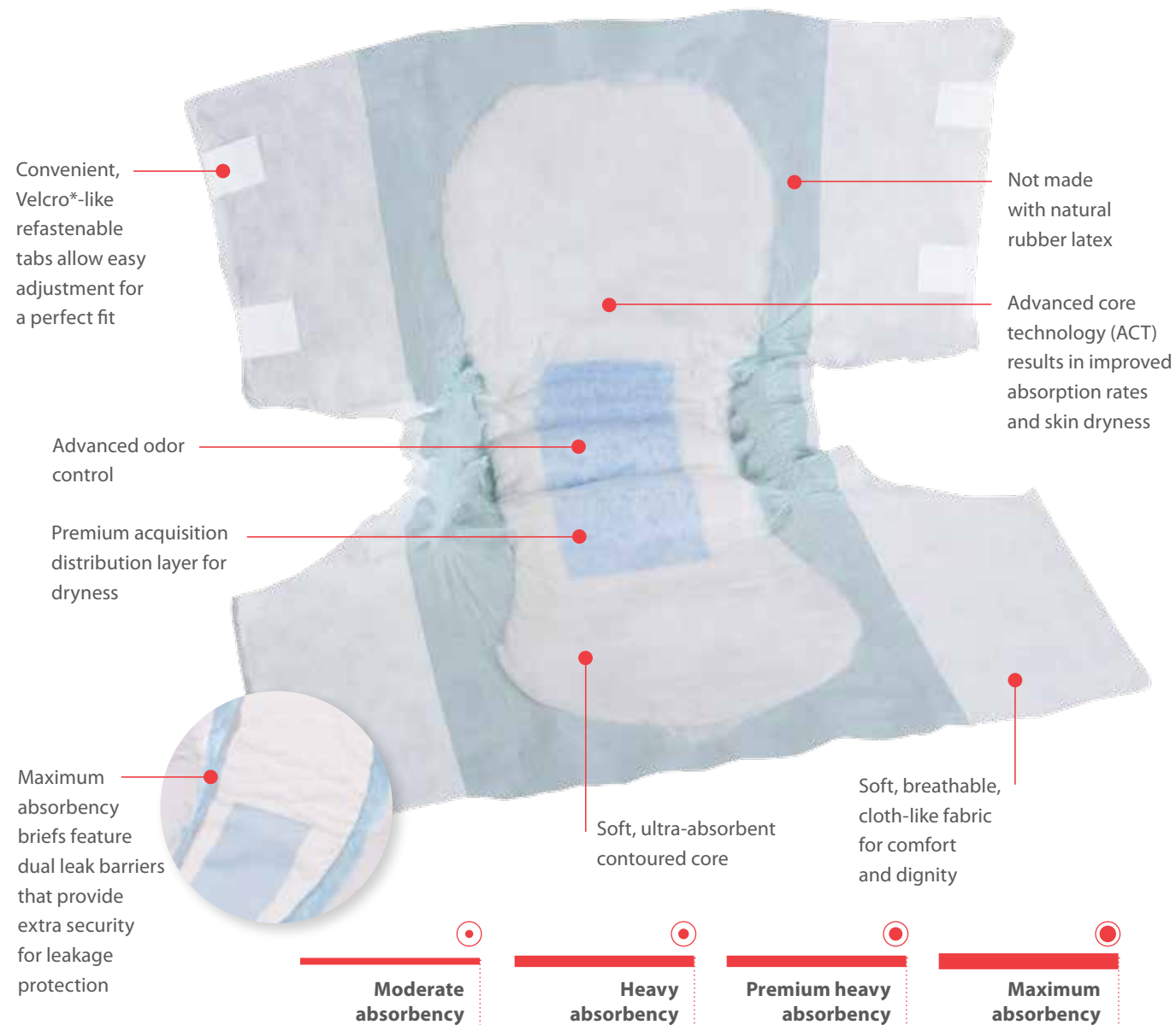
Cardinal Health number	Absorbent core	Backsheet color	Size	Qty.
MAX3030UPS	Fluff/Polymer	Beige	30 x 30 in.	5 pc/bg, 20 bg/cs
MAX3036UPS	Fluff/Polymer	Beige	36 x 30 in.	5 pc/bg, 15 bg/cs
MAX3636UPS	Fluff/Polymer	Beige	36 x 36 in.	5 pc/bg, 10 bg/cs

Comfort and security

Standard underpads made simple

Briefs

made simple



Moderate absorbency — advanced core technology, cloth-like outer fabric, advanced odor control, tape fastener

Cardinal Health number	Size	Color	Qty.
BVMMMD100	Medium (32 - 44 in.)	White	16 ea/bg, 6 bg/cs
BVMLG110	Large (45 - 58 in.)	Blue	18 ea/bg, 4 bg/cs
BVMXL120	XL (59 - 64 in.)	Beige	15 ea/bg, 4 bg/cs

Heavy absorbency — advanced core technology, cloth-like outer fabric, advanced odor control, acquisition layer, velcro*-like tab fastener

Cardinal Health number	Size	Color	Qty.
BVHMD210	Medium (32 - 44 in.)	White	20 ea/bg, 4 bg/cs
BVHLG220	Large (45 - 58 in.)	Blue	20 ea/bg, 4 bg/cs
BVHXL230	XL (59 - 64 in.)	Beige	20 ea/bg, 4 bg/cs

Premium heavy absorbency — advanced core technology, cloth-like outer fabric, advanced odor control, premium acquisition layer, velcro*-like tab fastener

Cardinal Health number	Size	Color	Qty.
BPHS200	Small (22 - 36 in.)	Green	24 ea/bg, 4 bg/cs
BPHM600	Medium (32 - 44 in.)	White	16 ea/bg, 6 bg/cs
BPHL610	Large (45 - 58 in.)	Blue	18 ea/bg, 4 bg/cs
BPHXL620	XL (59 - 64 in.)	Beige	15 ea/bg, 4 bg/cs
BPH2XL630	2XL (63 - 69 in.)	Green	12 ea/bg, 4 bg/cs

Maximum absorbency — advanced core technology, cloth-like outer fabric, advanced odor control, premium acquisition layer, velcro*-like tab fastener, stand-up leg cuff leak barrier

Cardinal Health number	Size	Color	Qty.
BEUM800	Medium (32 - 44 in.)	White	16 ea/bg, 6 bg/cs
BEUL810	Large (45 - 58 in.)	Blue	18 ea/bg, 4 bg/cs
BEUXL820	XL (59 - 64 in.)	Beige	15 ea/bg, 4 bg/cs

Bariatric — advanced core technology, cloth-like outer fabric, advanced odor control, premium acquisition layer, velcro*-like tab fastener, stretch side panels

Cardinal Health number	Size	Color	Qty.
BBAR01	Bariatric (Up to 95 in.)	White	8 ea/bg, 4 bg/cs

*VELCRO is a registered trademark of VELCRO Industries B.V. This product is not affiliated with or related to VELCRO Industries B.V.

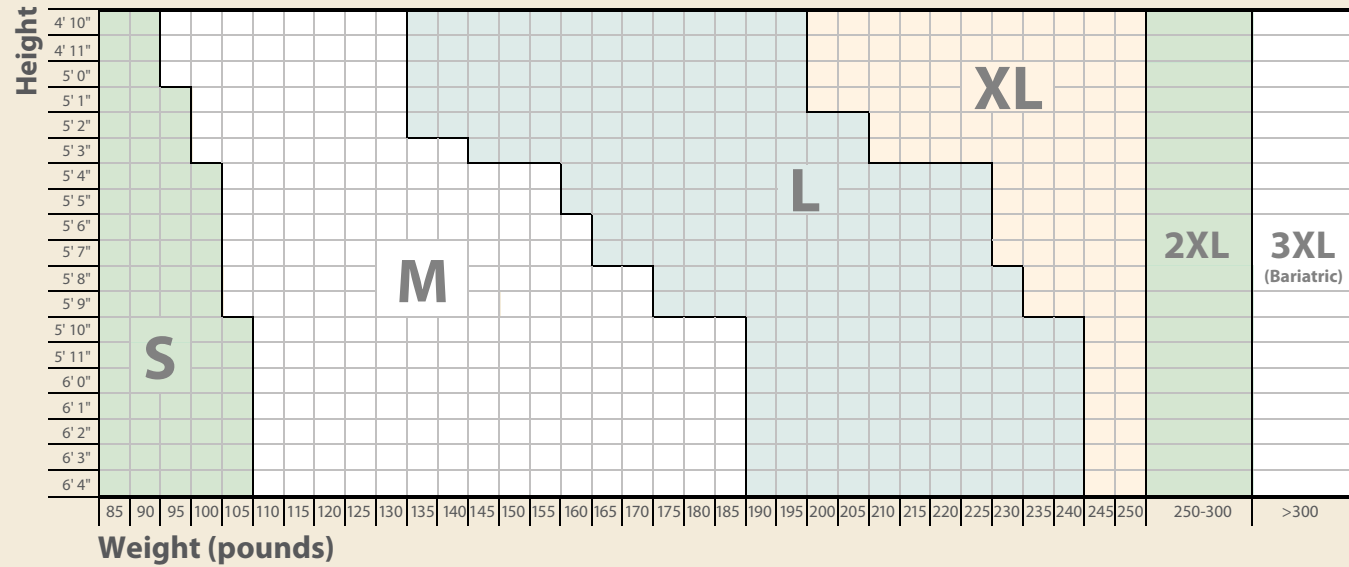
800.964.5227 • cardinalhealth.com

Maximum protection

Briefs made simple

Adult brief sizing guide — selecting the right size brief just got easier!

The following brief size chart is a general guideline only. Find where the height and weight intersects for the recommended product fit.



Brief sizes	Waist measurements	Color
 Small	22 – 36 in.	Green
 Medium	32 – 44 in.	White
 Large	45 – 58 in.	Blue
 XLarge	59 – 64 in.	Beige
 2XLarge	63 – 69 in.	Green
 Bariatric (3XL)	Up to 95 in.	White

Size of brief correlates with color.

Underwear made simple



Moderate absorbency — advanced core technology, cloth-like outer fabric, advanced odor control, premium acquisition layer, stand-up leg cuff leak barrier

Cardinal Health number	Size	Qty.
UWMSM10	Small (22 - 36 in.)	20 ea/bg, 4 bg/cs
UWMMD15	Medium (32 - 44 in.)	20 ea/bg, 4 bag/cs
UWMLG20	Large (44 - 58 in.)	18 ea/bg, 4 bag/cs
UWMXL25	XL (58 - 68 in.)	14 ea/bg, 4 bag/cs
UWM2XL30	2XL (68 - 80 in.)	12 ea/bg, 4 bag/cs

Heavy absorbency — advanced core technology, cloth-like outer fabric, advanced odor control, premium acquisition layer, stand-up leg cuff leak barrier

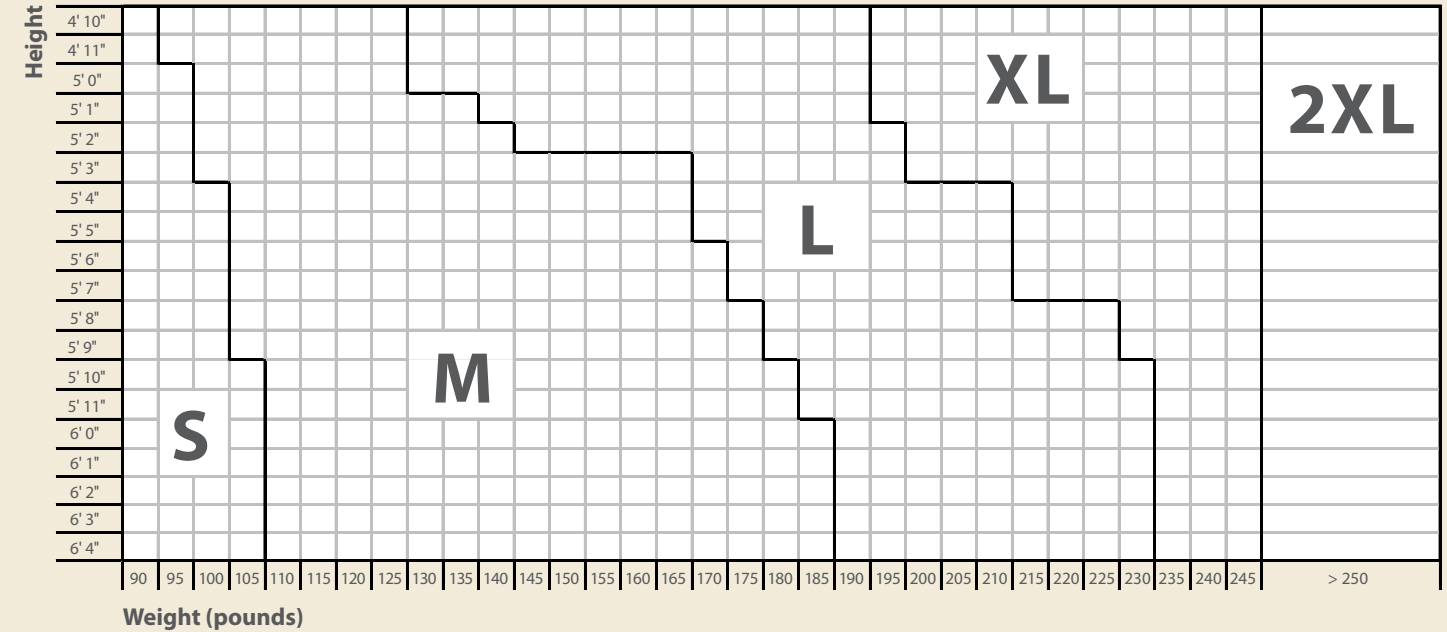
Cardinal Health number	Size	Qty.
UWHMD80	Medium (32 - 44 in.)	18 ea/bg, 4 bg/cs
UWHLG85	Large (44 - 58 in.)	16 ea/bg, 4 bg/cs
UWHXL90	XL (58 - 68 in.)	14 ea/bg, 4 bg/cs

Moderate absorbency

Heavy absorbency

Adult underwear sizing guide — selecting the right size underwear just got easier!

The following underwear size chart is a guideline only. Find where the height and weight intersects for the recommended product fit.



Underwear sizes	Waist measurements
Small	22 – 36 in.
Medium	32 – 44 in.
Large	44 – 58 in.
XLarge	58 – 68 in.
2XLarge	68 – 80 in.

Underwear are available in white only with size printed on the outside.

Insert pads made simple

Full length adhesive strip easily adheres to underwear

Not made with natural rubber latex

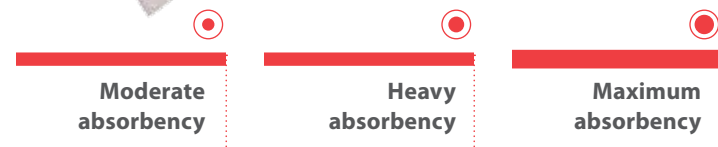
Odor neutralizing core keeps you feeling fresh and clean

Contoured shape for discreet, comfortable fit

Individually wrapped for convenience

Soft, breathable, cloth-like fabric for comfort and dignity

Advanced targeted core zoning for superior dryness



Moderate absorbency

Cardinal Health number	Size	Color	Qty.
IPM1325	13 x 23½ in.	Beige	16 ea/bg, 6 bg/cs

Heavy absorbency

Cardinal Health number	Size	Color	Qty.
IPH313	4 x 13 in.	White	18 ea/bg, 9 bg/cs

Maximum absorbency

Cardinal Health number	Size	Color	Qty.
IPMX714	4 x 16½ in.	Peach	24 ea/bg, 10 bg/cs
IPMX1228	13 x 26½ in.	Green	16 ea/bg, 4 bg/cs

Superior dryness

Insert pads made simple

Pants made simple



Premium stretchable knit pants

Cardinal Health number	Size	Waistband color	Qty.
KPMDLG	M/Large (waist sizes 20 to 36 in.)	Brown/Blue	5 ea/bg, 20 bg/cs
KPMDLG02	M/Large (waist sizes 20 to 36 in.)	Brown/Blue	2 ea/bg, 50 bg/cs
KPXLG	XL (waist sizes 28 to 52 in.)	Yellow/Green	5 ea/bg, 20 bg/cs
KPXLG02	XL (waist sizes 28 to 52 in.)	Yellow/Green	2 ea/bg, 50 bg/cs
KP2XLG	2XL (waist sizes 38 to 62 in.)	Brown/Blue	5 ea/bg, 20 bg/cs
KP2XLG02	2XL (waist sizes 38 to 62 in.)	Brown/Blue	2 ea/bg, 50 bg/cs

Stretchable mesh pants

Cardinal Health number	Size	Waistband color	Qty.
MPLG	Large (waist to 56 in., leg to 28 in.)	Brown	100 ea/cs
MPLG02	Large (waist to 56 in., leg to 28 in.)	Brown	2 ea/bg, 50 bg/cs
MPXLG	XL (waist to 62 in., leg to 32 in.)	Green	100 ea/cs
MPXLG02	XL (waist to 62 in., leg to 32 in.)	Green	2 ea/bg, 50 bg/cs
MP2XLG	2XL (waist to 74 in., leg to 38 in.)	Purple	100 ea/cs
MP2XLG02	2XL (waist to 74 in., leg to 38 in.)	Purple	2 ea/bg, 50 bg/cs

Premium comfort

Pants made simple

Cardinal Health Incontinence Products

You're busy enough.
Let's keep this simple.

For more information or to order, contact
your Cardinal Health sales representative,
call 800.964.5227 or visit cardinalhealth.com.



cardinalhealth.com

© 2014 Cardinal Health. All rights reserved. CARDINAL HEALTH, the Cardinal Health LOGO and ESSENTIAL TO CARE are trademarks or registered trademarks of Cardinal Health. All other marks are the property of their respective owners. Lit. No. 2MC14-14002 (05/2014)

Cardinal Health
7000 Cardinal Place
Dublin, Ohio 43017