



Lead with confidence

Sysmex CS-5100 Hemostasis System

usa.siemens.com/diagnostics

SIEMENS
Healthineers 

Introducing the Sysmex CS-5100 System with smart-design PSI technology



Utilizing smart-design PSI™ technology to ensure the viability of test samples, the Sysmex® CS-5100 System maximizes hemostasis workflow efficiency and minimizes risk for unprecedented confidence and peace of mind.

A fully automated high-volume coagulation system, the Sysmex CS-5100 delivers:

- Confidence in results with smart-design PSI System technology to help identify preanalytical errors
- Consistency of results to optimize use across multisite labs
- High-speed sample-processing throughput for faster diagnosis and monitoring
- High-capacity performance with extended walkaway time
- Multidisciplinary connectivity with automation and data-management solutions from Siemens Healthineers for consolidated workflow

Lead with globally proven PSI technology that automates and standardizes sample management for accurate, consistent results. The Sysmex CS-5100 System helps high-volume labs achieve first-run accuracy by identifying and automatically managing potentially problematic test samples using simultaneous multiwavelength PSI technology.

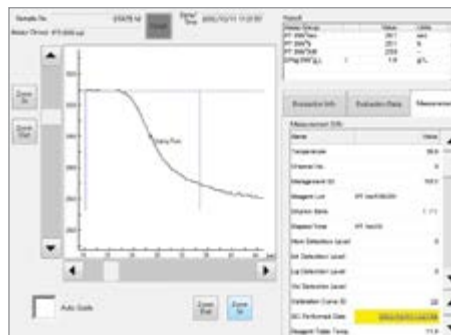
The Sysmex CS-5100 System delivers advanced diagnostic workstation capabilities:

- Automates primary-tube sample-volume checks to identify potential inaccuracies caused by improper sample collection
- Minimizes the need for manual sample inspections and maximizes operator information
- Flags sample results from collection tubes with improper sample volume for review and reporting purposes

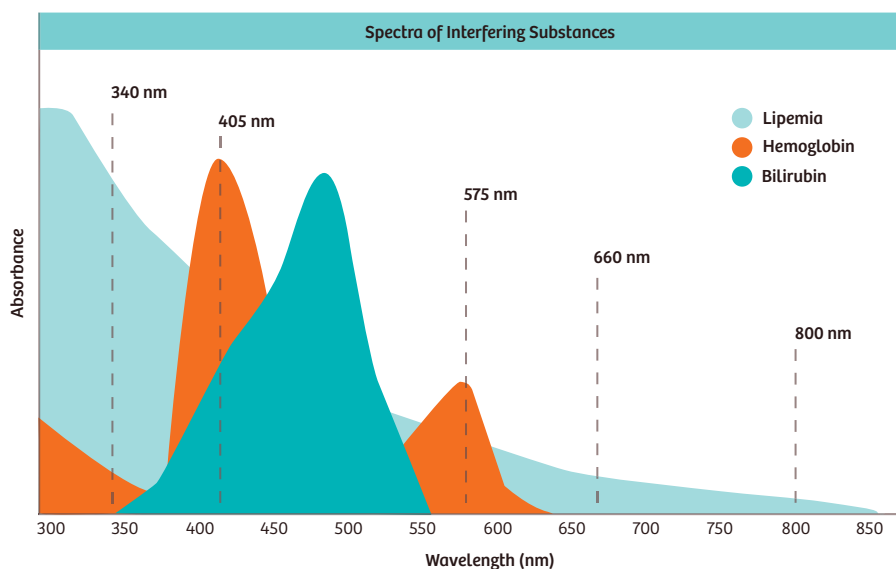
Lead with multiple testing capabilities delivered on a single high-volume platform. The Sysmex CS-5100 System's wide optical spectrum provides four different measurement principles, enabling clotting, chromogenic, immunologic, and aggregation* testing on a single high-volume platform.

Simultaneous multiwavelength scanning of clotting reactions at 340 nm, 405 nm, 575 nm, 660 nm, and 800 nm in all 20 detector channels:

- Reduces effects of interfering substances on absorbance spectra by automatically selecting optimal wavelengths
- Enables high-throughput capacity for a variety of test profiles



Measurement Principle	Wavelengths (nm)
Clotting	340, 405, 575, 660, 800
Chromogenic	340, 405, 575, 660, 800
Immunologic	340, 405, 575, 660, 800
Aggregation*	660



An advantage of photo-optical clot detection is the ability to review the entire clot with analysis by sophisticated software to aid in determining the correct coagulation test parameters for patients with unusual in vitro clot reactions.¹

*Under development.

Lead with the Sysmex CS-5100 Hemostasis System



Extended walkaway time streamlines workflow

- Onboard capacity of up to 3000 tests^{*}
- Automatic redilution and repeat, reflex testing water and liquid waste can be plumbed
- Primary tubes, pediatric tubes, and sample cups on the same rack
- Refrigerated reagent chamber at approximately 10°C for extended onboard reagent stability



Multidisciplinary connectivity with Siemens automation and data-management solutions consolidates workflow

- Aptio[®] Automation
- PSI technology brings added confidence to laboratory automation system sample handling
- Point-in-space sample transfer design
- CentraLink[™] Data Management System
- ADVIA[®] LabCell[®] Automation Solution



High sample-processing throughput with fast turnaround time facilitates quicker diagnosis and monitoring

- Up to 400 tests per hour for PT/APTT[†]
- Third-generation cap-piercing technology for consistent throughput, regardless of open, capped, or mixed samples
- Random-access test menu, including specialty and aggregation[†] assay capabilities
- Priority loading and testing of STAT samples at any time
- Simultaneous processing of primary and pediatric samples





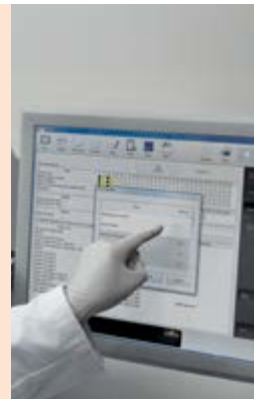
Intuitive user interface with detailed sample traceability provides greater confidence

- Thorough traceability of sample results with easy-to-use audit trails for greater clinical insight
- Detailed sample result reporting, with data storage for up to 60 results per sample for 10,000 samples
- Includes operator ID, time, and date stamps; calibration curve and measurement result information; operation and error logs; maintenance and quality control history; and automatic backup and data storage

Evaluation Info	Evaluation Date	M
Measurement Info		
Name		
Temperature		
Channel No.		
Management ID		
Reagent Lot	APTT	
	PSL547382 CaCl2 53974	
Dilution Ratio		
Elapsed Time	APTT PSL0a02 00m	
	30	
Hem Detection Level		
Clot Detection Level		
Li Detection Level		
Yol Detection Level		
Calibration Curve ID		
QC Performed Date	2015/04/23 21:0	

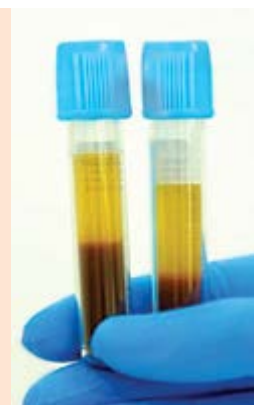
Consistency of results optimizes use across multisite labs

- Results correlate across the Sysmex family of hemostasis systems
- Same reagents, consumables[§], controls, calibrators, and assay reference ranges simplify purchases for multisite labs
- Similar user software minimizes training requirements for multisite labs
- Same assay reference ranges help standardize laboratory information system (LIS) report settings among health system members, facilitating patient and physician mobility



PSI technology helps identify preanalytical errors to minimize lab concerns

- Primary-tube sample-volume check identifies potential inaccuracies caused by improper sample collection
- Simultaneous multiwavelength analytical scanning helps to detect and manage unsuitable samples



* 3000-test capacity for PT testing; 2880-test capacity for APTT testing; 2880-test capacity for PT/APTT testing; 2840-test capacity PT/APTT/Fbg testing; 2436-test capacity for PT/APTT/AT3 testing; and 1890-test capacity for PT/APTT/AT3/DD testing (based on internal validation from Sysmex Corporation).

† Throughput values were determined by the time to first result; processing capabilities vary depending on the reagent used. Stated throughput value was determined using Siemens' study protocol with PT (Thromborel® S Reagent), APTT (Pathromtin™ SL Reagent), INNOVANCE® D-Dimer Reagent, and AT (INNOVANCE AT Reagent) test applications.

‡ Under development.

§ Excludes Sysmex some CA Systems consumables.

Lead with capability, consistency, and connectivity



Advanced reagent management helps maintain uninterrupted workflow

- Multiple lots of same reagents onboard, with flexible vial-type management
- Reagent vial-sampling angle provides greater usable reagent volume
- Load up to 40 reagents on the reagent table and up to 5 buffer vials on the buffer rack



Sophisticated software

- Windows 7-based software provides a user-friendly interface easily customizable to lab requirements
- Software supports error management and troubleshooting
- System provides automatic validation of results with bidirectional LIS connectivity
- Two-dimensional barcode input of Table of Assigned Values for standards, calibrators, controls, and reagents ensures accurate transfer of ISI and nominal values
- QC automatically runs with change of reagent vial and at user-defined time intervals

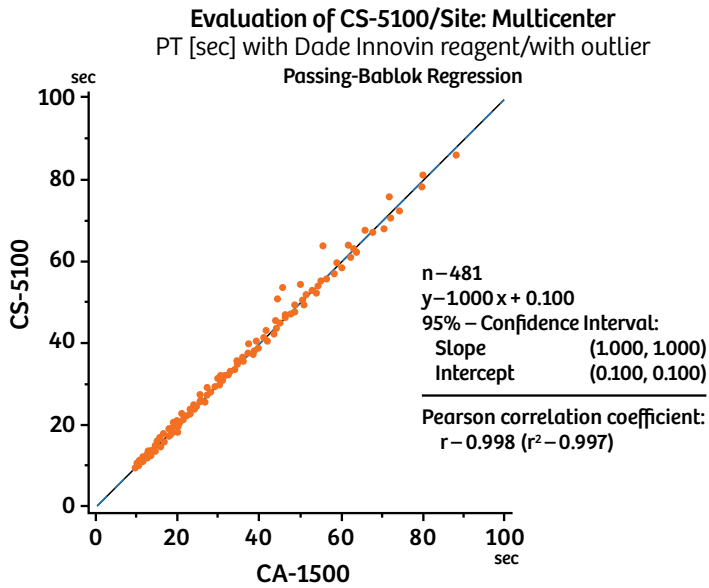


Real-time reagent and consumables monitoring facilitates ease of use and workflow efficiency

- Provides complete, easy to understand onboard reagent information with supporting graphics and data
- 24-inch monitor displays intuitive symbols to indicate statuses
- Identifies and resolves issues with clear status messages



Excellent correlation of results across the Sysmex CS family of systems



Customizable lab automation solutions offer the flexibility to meet current and future needs

Multidisciplinary connectivity, with options for chemistry, hematology, hemostasis, and immunoassay, supports customizable integration with Siemens automation solutions, including:

- Aptio Automation
- Centralink Data Management System
- ADVIA LabCell Automation Solution



Aptio Automation provides unlimited potential for lab optimization by combining peak performance, adaptability, and intelligent technology with Siemens' signature automation workflow expertise.

On account of certain regional limitations of sales rights and service availability, we cannot guarantee that all products included in this brochure are available through the Siemens sales organization worldwide. Availability and packaging may vary by country and is subject to change without prior notice. Some/All of the features and products described herein may not be available in the United States.

The information in this document contains general technical descriptions of specifications and options as well as standard and optional features, which do not always have to be present in individual cases.

Siemens reserves the right to modify the design, packaging, specifications, and options described herein without prior notice. For the most current information, please contact your local sales representative from Siemens.

Note: Any technical data contained in this document may vary within defined tolerances. Original images always lose a certain amount of detail when reproduced.

ADVIA, Aptio, CentraLink, Dade, INNOVANCE, Innovin, LabCell, Pathromtin, PSI, Thromborel, and all associated marks are trademarks of Siemens Healthcare Diagnostics Inc. or its affiliates. Sysmex is a registered trademark of Sysmex Corporation. All other trademarks and brands are the property of their respective owners.

Product availability may vary from country to country and is subject to varying regulatory requirements. Please contact your local representative for availability.

Reference

Bai B, Christie DJ, Gorman RT, Wu JR. Comparison of optical and mechanical clot detection for routine coagulation testing in a large volume clinical laboratory. Blood Coagul Fibrinolysis. 2008 Sep;19(6):569-576.

Siemens Healthineers Headquarters

Siemens Healthcare GmbH
Henkestr. 127
91052 Erlangen
Germany
Phone: +49 9131 84-0
siemens.com/healthineers

Local Contact Information

Siemens Healthcare Diagnostics Inc.
Laboratory Diagnostics
511 Benedict Avenue
Tarrytown, NY 10591-5005
USA
Phone: +1-888-826-9702
usa.siemens.com/diagnostics